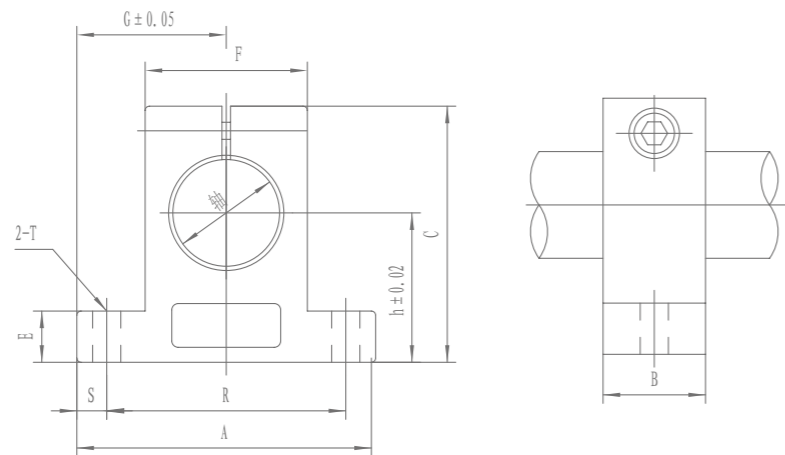


▶ SK



SK

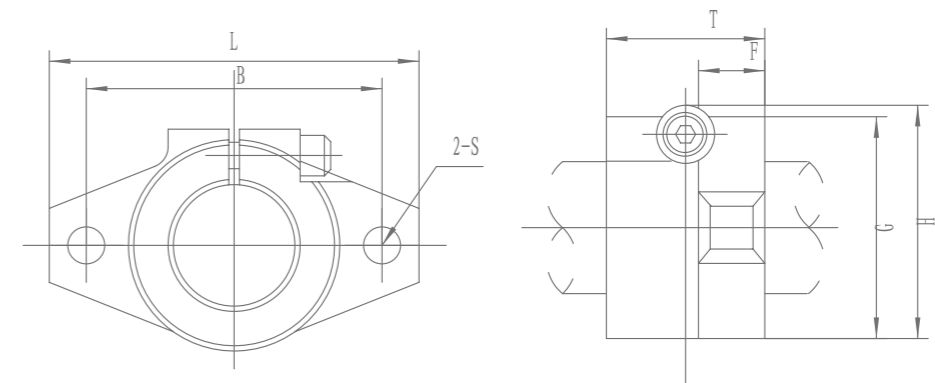


型号 Part Number	轴径 Shaft Diameter	主要尺寸 Main dimensions(mm)										锁紧螺栓 Clamping bolt designation	安装螺栓 Mounting bolt designation	重量 g Weight
		h	G	A	B	C	E	F	S	R	T			
SK-8	8	20	21	42	14	32.8	6	18	5	32	5.5	M4	M5	24
SK-10	10	20	21	42	14	32.8	6	18	5	32	5.5	M4	M5	24
SK-12	12	23	21	42	14	37.5	6	20	5	32	5.5	M4	M5	30
SK-13	13	23	21	42	14	37.5	6	20	5	32	5.5	M4	M5	30
SK-16	16	27	24	48	16	44	8	25	5	38	5.5	M4	M5	40
SK-20	20	31	30	60	20	51	10	30	7.5	45	6.6	M5	M6	70
SK-25	25	35	35	70	24	60	12	38	7	56	6.6	M6	M6	130
SK-30	30	42	42	84	28	70	12	44	10	64	9	M6	M8	180
SK-35	35	50	49	98	32	82	15	50	12	74	11	M8	M10	270
SK-40	40	60	57	114	36	96	15	60	12	90	11	M8	M10	420
SK-50	50	70	63	126	40	120	18	74	13	100	14	M12	M12	750
SK-60	60	80	74	148	45	136	18	90	14	120	14	M12	M12	1100

▶ SHF



SHF



型号 Part Number		主要尺寸和安装尺寸 Main dimensions and Mounting dimensions (mm)							锁紧螺栓 Clamping bolt designation	安装螺栓 Mounting bolt designation	重量 g Weight
密封型 Seal Type	轴径 Shaft Diameter	L	T	F	H	G	B	2S			
SHF-8	8	43	10	-	24	-	32	5.5	M5	M4	13
SHF-10	10	43	10	-	24	-	32	5.5	M5	M4	13
SHF-12	12	47	13	7	28	25	36	5.5	M5	M4	20
SHF-13	13	47	13	7	28	25	36	5.5	M5	M4	20
SHF-16	16	50	16	8	31	28	40	5.5	M5	M4	27
SHF-20	20	60	20	8	37	34	48	7	M6	M5	40
SHF-25	25	70	25	10	42	40	56	7	M6	M5	60
SHF-30	30	80	30	12	50	46	64	9	M8	M6	110
SHF-35	35	92	35	14	58	50	72	12	M10	M8	380
SHF-40	40	105	40	16	67	56	80	12	M10	M10	510
SHF-50	50	122	50	19	83	70	96	14	M12	M12	890
SHF-60	60	140	60	23	95	82	112	14	M12	M12	1500